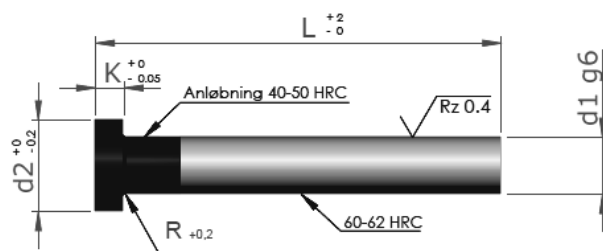


DIN 1530/ISO 6751

Skaft : 60-62 HRC

Hoved: 40-50 HRC

Mat.: WS-1.2067



Bestillingsnr.: UDST-Ø x L-AH

Ø/d1	d2	K	Pris						
			L						
			100	125	160	200	250	315	
0,40	2,5	1,2	X						
0,50	2,5	1,2	X						
0,55	2,5	1,2	X						
0,60	2,5	1,2	X		X				
0,65	2,5	1,2	X						
0,70	2,5	1,2	X		X				
0,75	2,5	1,2	X						
0,80	2,5	1,2	X	X	X	(X)			
0,90	2,5	1,2	X	X	X	(X)			
1,00	2,5	1,2	X	X	X	(X)	X		
1,01	2,5	1,2	X		X				
1,02	2,5	1,2	X		X				
1,05	2,5	1,2	X		X				
1,10	2,5	1,2	X	X	X	(X)	X		
1,15	2,5	1,2	X		X				
1,20	2,5	1,2	X	X	X	(X)	X	X	
1,21	2,5	1,2			X				
1,22	2,5	1,2			X				
1,25	2,5	1,2	X	X	X	(X)			
1,30	3,0	1,5	X	X	X	(X)	X		
1,40	3,0	1,5	X	X	X	(X)	X		
1,51	3,0	1,5	X		X				
1,52	3,0	1,5	X		X				
1,55	3,0	1,5	X		X				
1,60	3,0	1,5	X	X	X	X			X*
1,70	3,0	1,5	X	X	X	X	X		
1,80	3,0	1,5	X	X	X	X			X*
1,90	3,0	1,5	X	X	X	X	X		
2,01	4,0	2,0		X		X			
2,02	4,0	2,0		X		X			
2,03	4,0	2,0		X		X			
2,05	4,0	2,0		X		X			
2,10	4,0	2,0	X	X	X	X	X		X
2,25	4,0	2,0				X			

*Fås også i længde 400mm

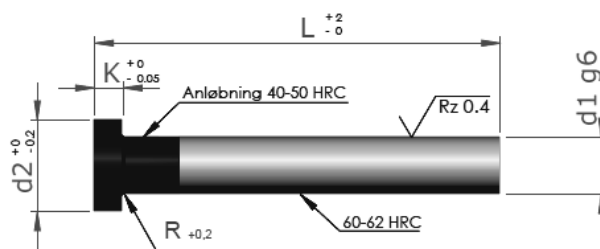
(X)Lagerføres

DIN 1530/ISO 6751

Skaft : 60-62 HRC

Hoved: 40-50 HRC

Mat.: WS-1.2067



Bestillingsnr.: UDST-Ø x L-AH

Ø/d1	d2	K	Pris					
			L					
			100	125	160	200	250	315
2,30	4,0	2,0	X	X	X	(X)	X	
2,40	5,0	2,0		X		(X)		X
2,51	5,0	2,0				(X)		
2,52	5,0	2,0				(X)		
2,55	5,0	2,0				X		
2,60	5,0	2,0	X	X	X	X	X	X
2,80	5,0	2,0		X		X		X
2,90	6,0	3,0		X		X		X
3,01	6,0	3,0		X		X		X
3,02	6,0	3,0		X		X**		
3,03	6,0	3,0		X		X		
3,05	6,0	3,0		X		X*		
3,10	6,0	3,0	X	X	X	X	X	X*
3,30	6,0	3,0	X	X	X	X*		
3,40	6,0	3,0	X	X	X	X		X*
3,60	7,0	3,0	X	X	X	X	X	
3,80	7,0	3,0	X	X	X	X		X
3,90	7,0	3,0	X	X		X	X*	
4,01	8,0	3,0			X		X*	
4,02	8,0	3,0			X		X**	
4,03	8,0	3,0					X*	
4,05	8,0	3,0		X		X*		
4,10	8,0	3,0		X	X	X	X	X**
4,30	8,0	3,0	X	X	X	X*		
4,40	8,0	3,0	X	X	X	X*		
4,60	8,0	3,0	X	X	X	X	X*	
4,70	8,0	3,0	X	X	X	X	X	X*
4,80	8,0	3,0	X	X		X		
4,90	8,0	3,0		X		X		
5,01	10,0	3,0				X*		
5,02	10,0	3,0				X*		
5,05	10,0	3,0		X			X*	
5,10	10,0	3,0	X	X	X	X	X*	
5,30	10,0	3,0		X	X		X*	

*Fås også i længde 400mm

**Fås også i længde 500 mm

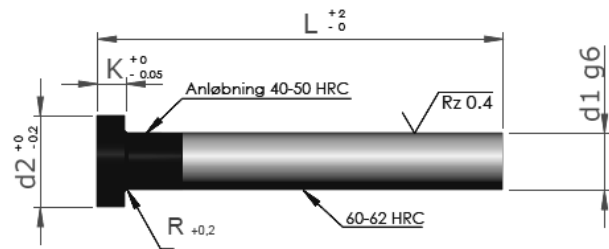
(X)Lagerføres

DIN 1530/ISO 6751

Skaft : 60-62 HRC

Hoved: 40-50 HRC

Mat.: WS-1.2067



Bestillingsnr.: UDST-Ø x L-AH

Ø/d1	d2	K	Pris					
			L					
			100	125	160	200	250	315
5,40	10,0	3,0		X	X		X*	
5,60	10,0	3,0		X	X		X*	
5,70	10,0	3,0		X	X		X*	
5,80	10,0	3,0		X	X	(X)	X*	
5,90	10,0	3,0			X		X*	
6,01	12,0	5,0					X	
6,02	12,0	5,0				(X)*		
6,05	12,0	5,0		X			X*	
6,10	12,0	5,0	X	X	X	(X)	X	X*
6,30	12,0	5,0		X		(X)	X*	
6,40	12,0	5,0		X		(X)	X*	
6,60	12,0	5,0		X		(X)	X**	
6,70	12,0	5,0		X		(X)	X**	
6,80	12,0	5,0		X		(X)	X	
6,90	12,0	5,0		X		(X)	X	
7,10	12,0	5,0					X*	
7,20	12,0	5,0		X		(X)	X*	
7,30	12,0	5,0					X	
7,40	12,0	5,0					X	
7,50	12,0	5,0	X	X	X	(X)	X	X*
7,60	14,0	5,0					X	
7,70	14,0	5,0					X	
7,80	14,0	5,0					X	
7,90	14,0	5,0					X	
8,01	14,0	5,0					X	
8,02	14,0	5,0					X	
8,05	14,0	5,0		X			X	
8,10	14,0	5,0		X			X	X*
8,30	14,0	5,0					X	
8,40	14,0	5,0					X	
8,60	14,0	5,0			X			X
8,70	14,0	5,0			X			X
8,80	14,0	5,0			X			X
8,90	14,0	5,0			X			X

*Fås også i længde 400mm

**Fås også i længde 500 mm

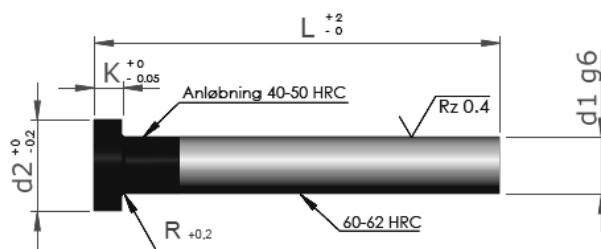
(X)Lagerføres

DIN 1530/ISO 6751

Skaft : 60-62 HRC

Hoved: 40-50 HRC

Mat.: WS-1.2067



Bestillingsnr.: UDST-Ø x L-AH

Pris								
Ø/d1	d2	K	L					
			100	125	160	200	250	315
9,10	14,0	5,0				(X)*		
9,20	14,0	5,0				(X)*		
9,30	14,0	5,0				(X)*		
9,40	14,0	5,0				(X)*		
9,50	14,0	5,0				(X)*		
9,60	16,0	5,0				(X)*		
9,70	16,0	5,0				(X)*		
9,80	16,0	5,0				(X)*		
9,90	16,0	5,0				(X)*		
10,10	16,0	5,0				(X)*		
11,50	16,0	5,0				X*		
12,10	18,0	7,0					X	
13,00	18,0	7,0	X	X	X	X	X	X*
13,50	22,0	7,0	X	X	X	X	X	X***
14,50	22,0	7,0	X	X	X	X	X	X*
15,00	22,0	7,0			X		X*	
16,20	22,0	7,0				X	X*	
16,50	22,0	7,0				X*		
20,50	26,0	8,0					X*	
22,00	28,0	8,0			X		X	
25,00	32,0	10,0	X	X	X	X	X	X**

*Fås også i længde 400mm

**Fås også i længde 500 mm

***Fås også i længde 630 mm

(X)Lagerføres