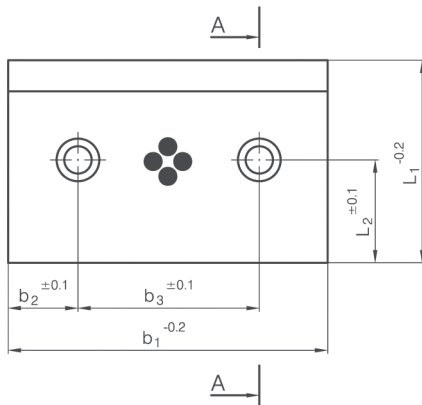
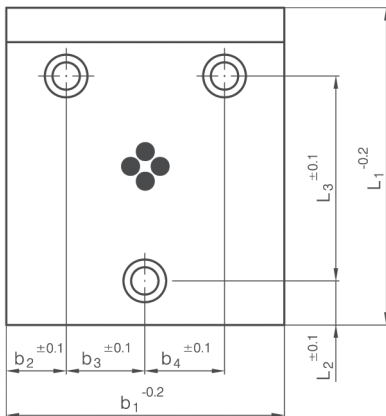
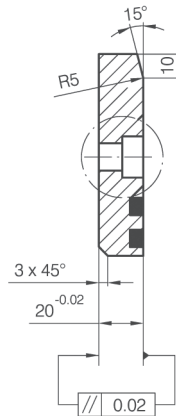


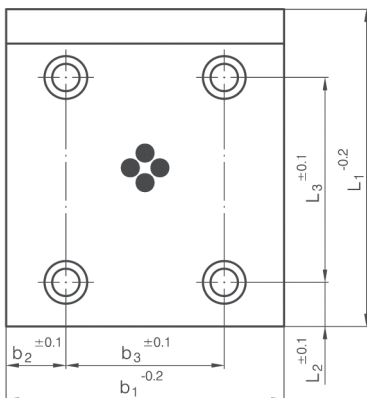
Form A



Form B



Form C

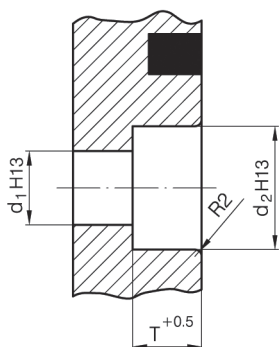


Form D



SPØRG OM PRIS

Detail Z



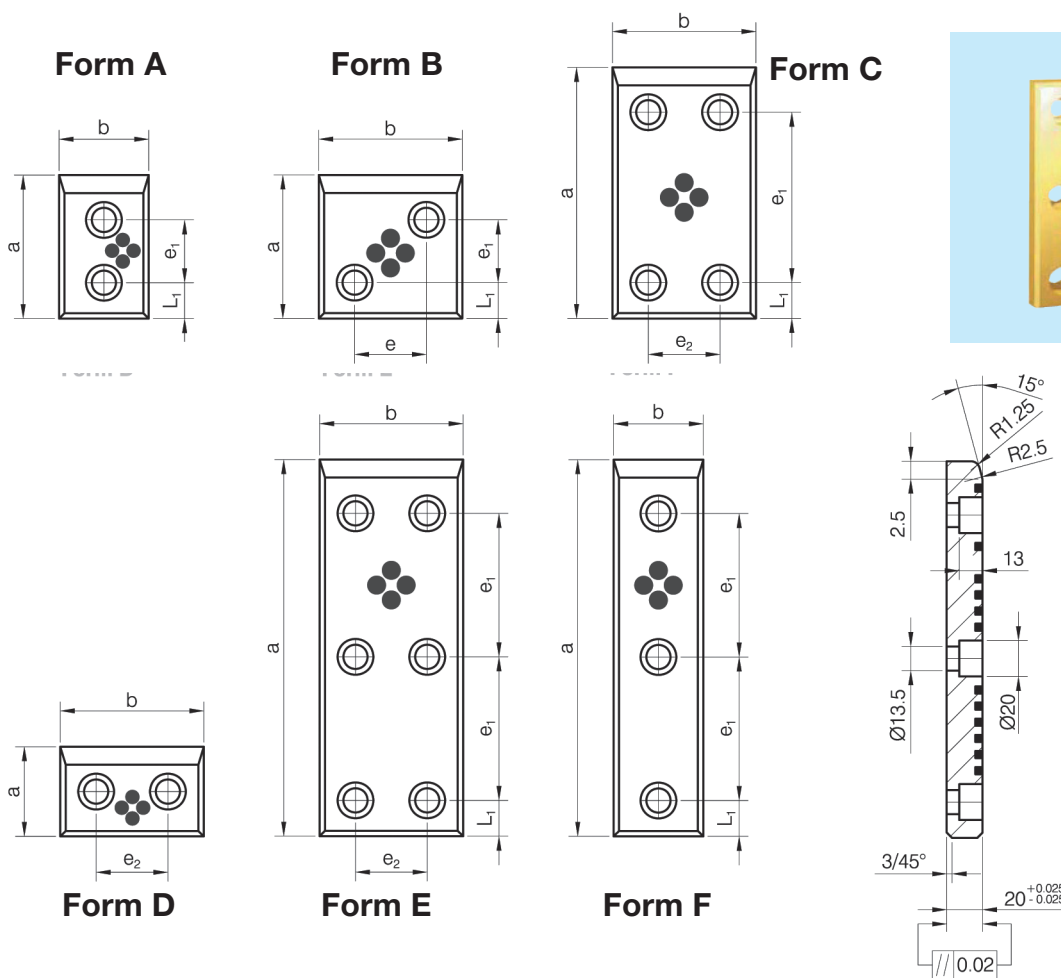
1280 - $b_1 \times L_1$

VDI 3357

Artikel nummer	Materiale
1280	GK-CuZn25A15 med smøremiddel
1280.S	Wr. N 1.7131 - Hærdet uden smøremiddel

Forboring	T	d_1	d_2
M8 x 25	9	9	15
M12 x 25	13	13,5	20

b_2	b_3	b_4	L_2	L_3	Form		b_1	L_1	Pris				
25	-	-	25	30	A	M8 x 25	50	80					
				50									
				75									
				110									
				150									
30	-	-	25	-	B	M8 x 25	80						
50													
75													
110													
150													
40	-	-	25	30	A	M12 x 25	80	50					
				50									
				75									
				110									
				150									
40	-	-	40	170	A	M12 x 25	100	250					
				235									
				25				-	-	25	B	M12 x 25	100
				40									
				50									
75													
110													
25	75	-	25	50	B	M12 x 25	125	50					
				75									
				110									
				150									
				170									
	37,5	37,5	-	40	235	C	M12 x 25	125	80				
					50								
					75								
					110								
					150								
110	-	-	25	170	B	M12 x 25	160	100					
				235									
				50									
				75									
				110									
55	55	-	25	150	C	M12 x 25	160	125					
				170									
				235									
				250									
				315									
110	-	-	40	235	D	M12 x 25	160	200					
				250									
				315									
				315									
				315									

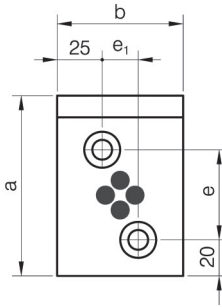


1280.1

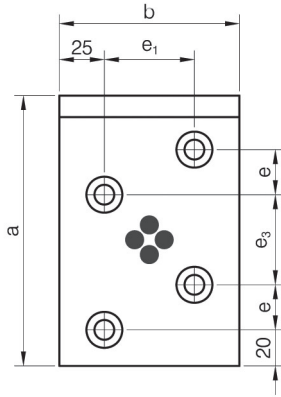
L ₁	e ₁	e ₂	b	a	Form	Pris
20	35	50	80	80	A	
	55			100		
	80			125		
	115			160		
	155			200		
	100			250		
25	0	40	80	50	D	
20	35			80	B	
	55			100	C	
	80			125		
	115			160		
	155			200	E	
	100	250				
132	315					
25	0	60	100	50	D	
20	35			80	B	
	55			100	C	
	80			125		
	115			160		
	155			200		

L ₁	e ₁	e ₂	b	a	Form	Pris		
20	100	60	100	250	E			
	132			315				
	0			50			D	
25	35	85	125	80	B			
	55			100				
	80			125				
	20			115	160		C	
				155	200			
				100	250			
25	132	120	160	315	E			
	0			50			D	
	35			80			C	
	55			100				
	80			125				
	20			115	160		200	160
155		200						
100		250						
132		315						
115		160	C					
155	200							

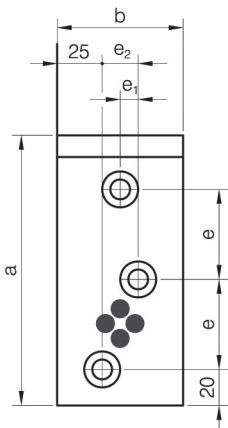
Form A



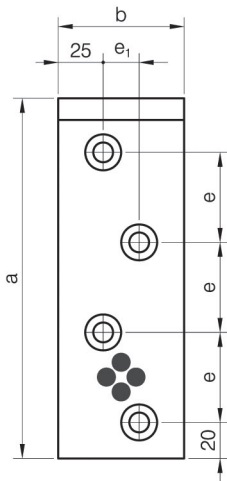
Form C



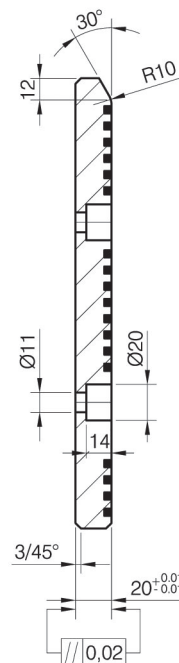
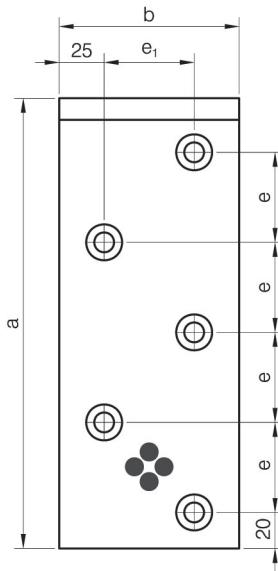
Form B



Form D

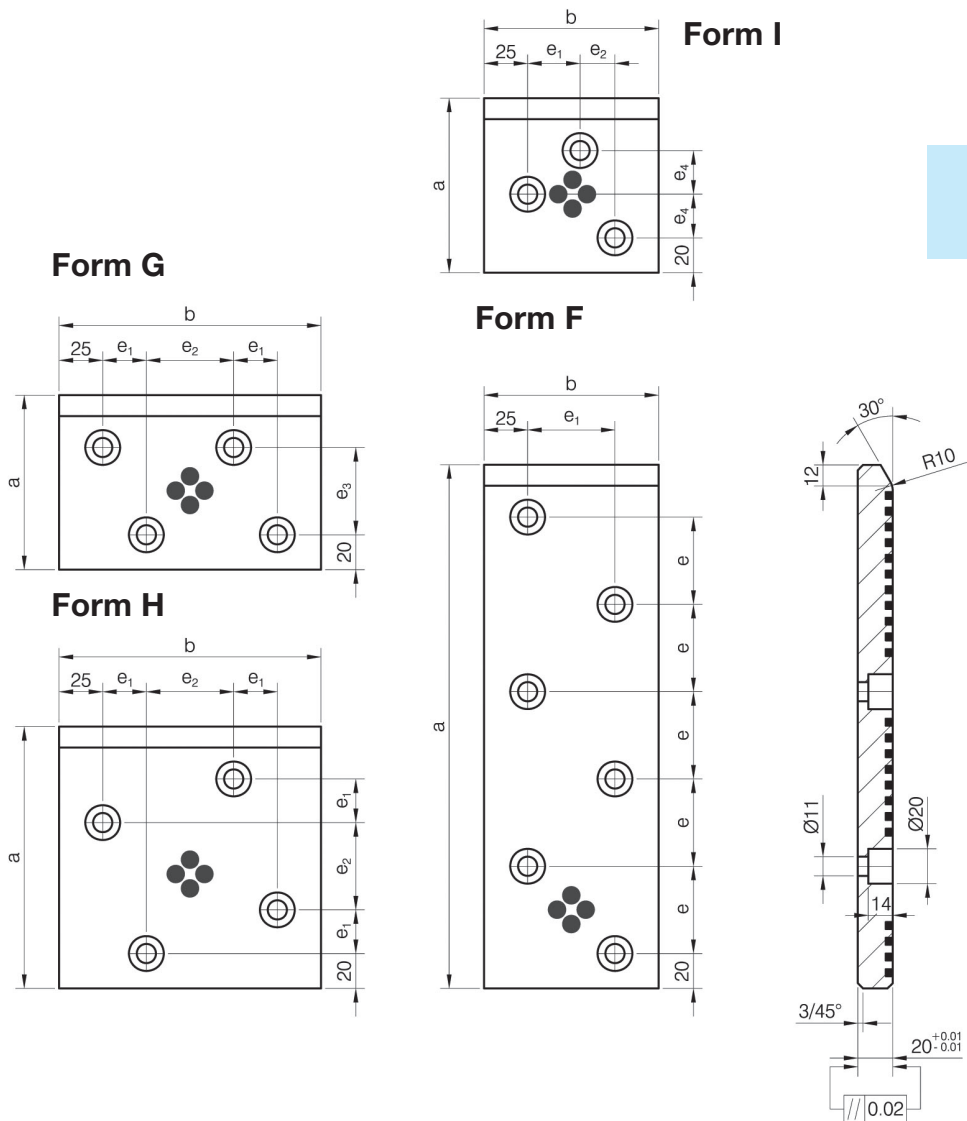


Form E

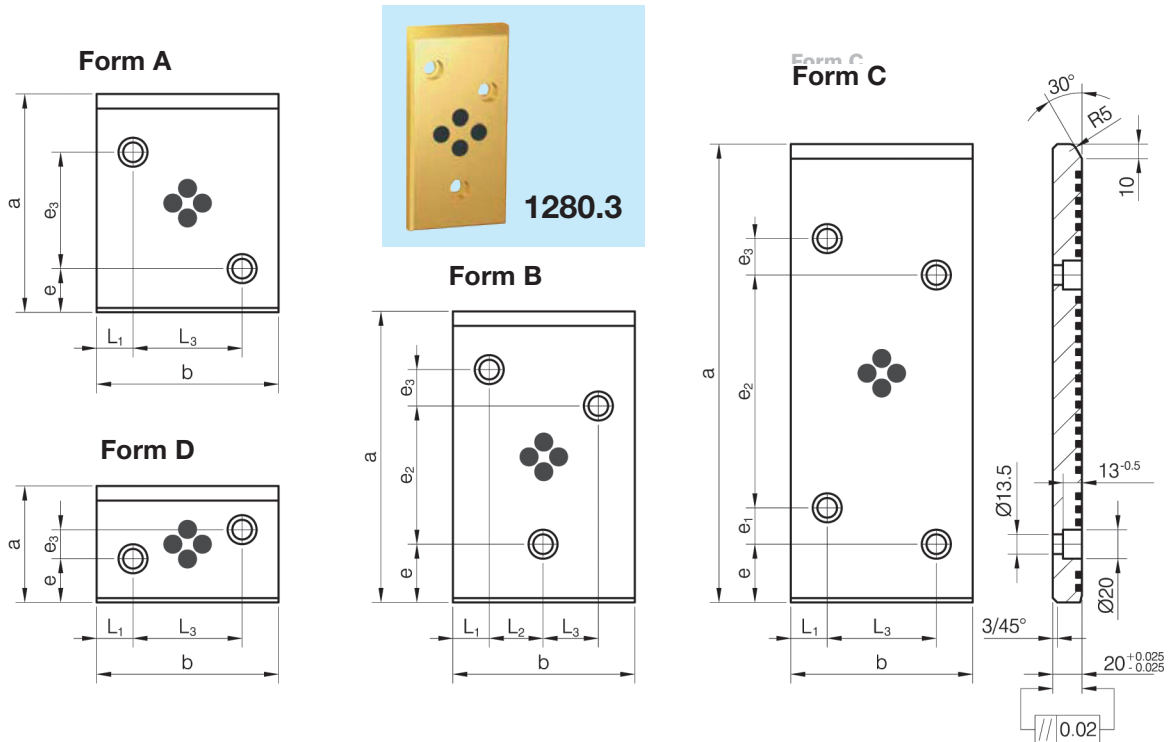


1280.2

SPØRG OM PRIS



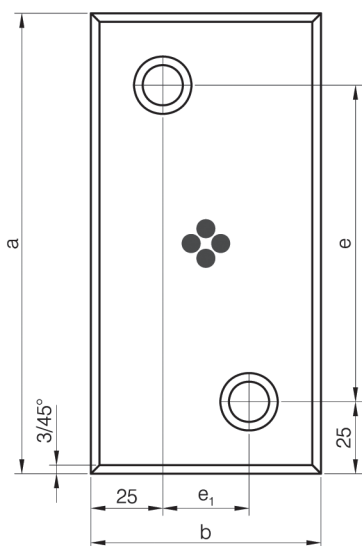
e	e ₁	e ₂	e ₃	e ₄	b	a	Form	Pris
50	20	-	-	-	70	100	A	
	10	20				B		
	20	-				D		
-	30	20	50	25	100	I		
25	50	-		-	100	150	C	
50			200			D		
			250			E		
			300			F		
-	25	50	50	-	150	100	G	
50	100	-	-			150	150	H
				200	D			
				250	E			
				300	F			
-	50	50	50	-	200	100	G	



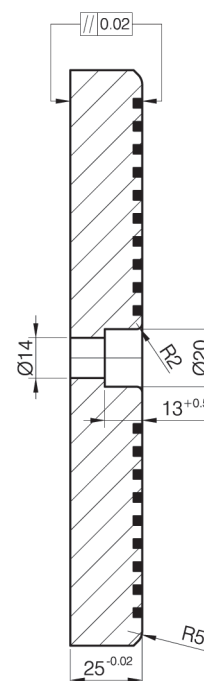
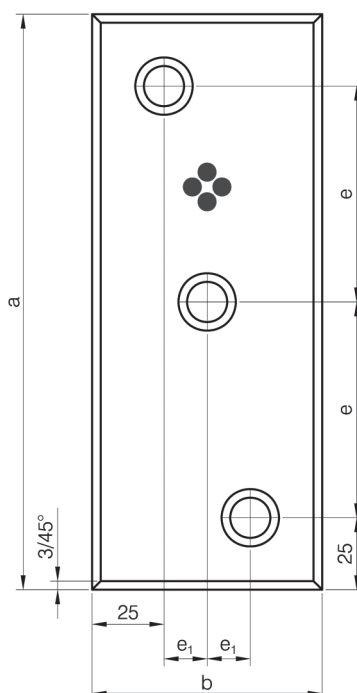
L ₁	L ₂	L ₃	e	e ₁	e ₂	e ₃	b	a	Form	Pris	
25	-	-	30			30	50	100	A		
			40			80		150			
						120		200			
20	-	40	30		-	80	100	A			
			40		80		150				
	20	20	40	170	250	B					
			210	25	315						
22	-	56	14			100	50	D			
			30				20			80	
	28	28	28	40		-	125	100	A		
				95		3		150			
				145		80		200			B
				210		25		250			
			25	315	C						
25	-	75	30			-	160	80	D		
			40		30	100					
	37	38	40	95	25	200	B				
				145	25	250					
	-	75	25	210	25	315	C				
30	-	100	30		-	160	100	A			
			40		80		150				
	50	50	95	25	200	B					
				145	25		250				
	-	100	25	210	25	315	C				



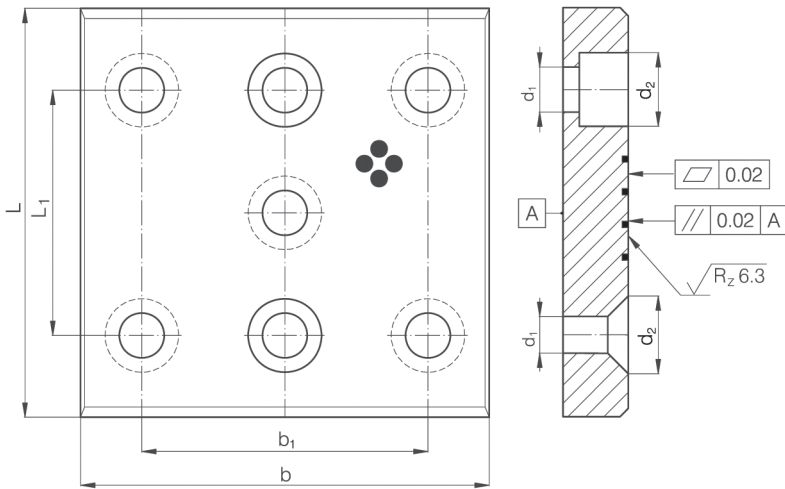
Form A





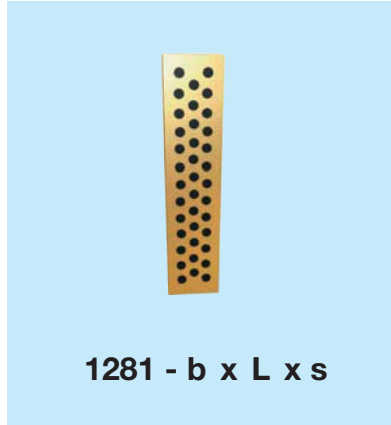
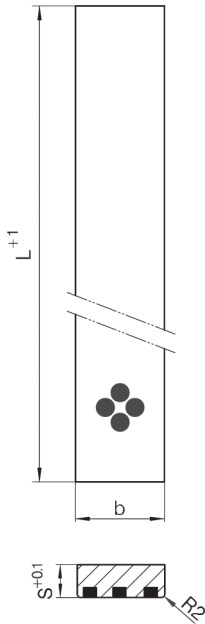
Form B



e ₁	e	b	a	Form	Pris
30	50	80	100	A	
	75		125		
	110		160		
	150		200	B	
50	75	100	125	A	
	110		160	B	
	150		200	A	
75	75	125	125	A	

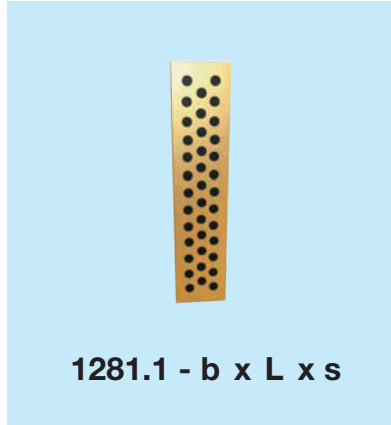
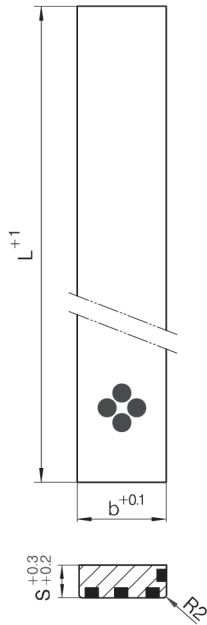


b	L	s	b ₁	L ₁	Form	d ₁	d ₂	t		Pris
125	100	20	85	60	• •	13,5	20	13	DIN 912 M12x25	
	160			120	• • •					
	250			210	• • •					
100	100	16	60	60	• •	11	18	11	DIN 912 M10x20	
	160			120	• • •					
	250			210	• • •					
80	100	12	40	60	• •	9	15	9	DIN 912 M8x20	
	160			120	• • •					
	250			210	• • •					
80	100	20	40	60	• •	13,5	20	13	DIN 912 M12x25	
	160			120	• • •					
	250			210	• • •					
60	100	16	30	60	• •	11	18	11	DIN 912 M10x20	
	160			120	• • •					
	160			120	• • •					
	200			210	• • •					
50	100	20	20	60	• •	13,5	20	13	DIN 912 M12x25	
	160			120	• • •					
	250			210	• • •					
40	100	8	-	60	• •	9	16,4	5	 DIN 7991 M8x15	
	160			120	• • •					
	250			210	• • •					
40	100	12	-	60	• •	9	15	9	DIN 912 M8x20	
	160			120	• • •					
	250			210	• • •					
40	100	16	-	60	• •	11	18	11	DIN 912 M10x20	
	160			120	• • •					
	250			210	• • •					
30	100	12	-	60	• •	9	15	9	DIN 912 M8x20	
	160			120	• • •					
	250			210	• • •					

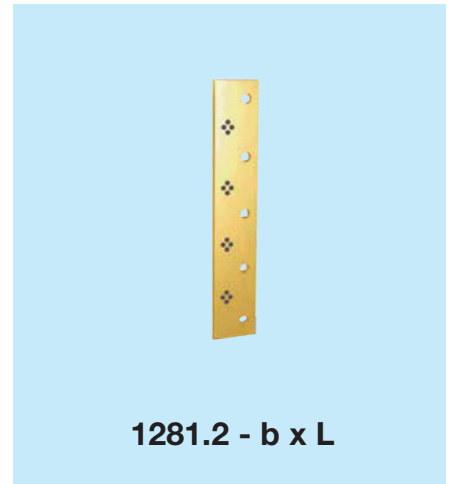
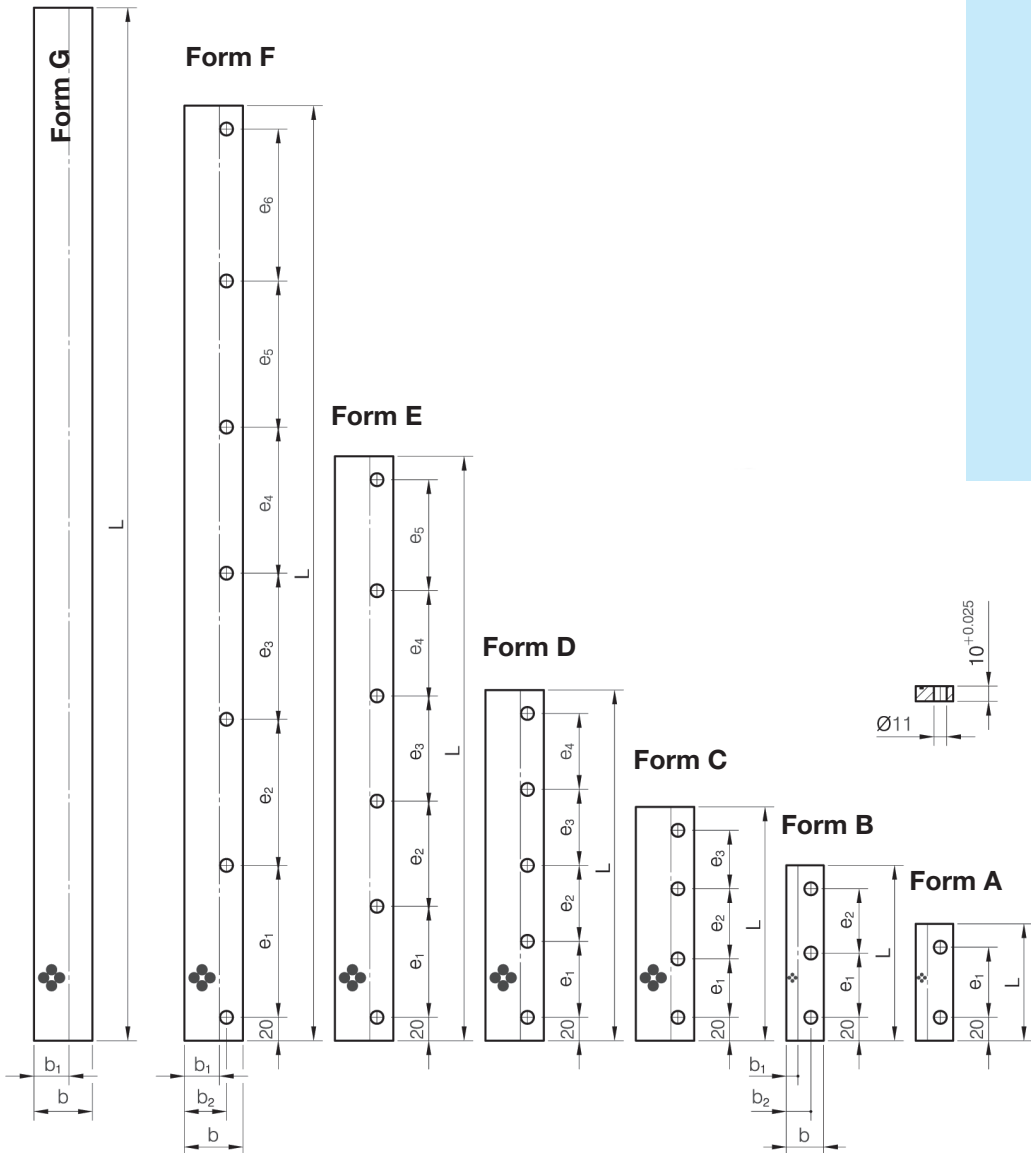


b	L	s	Pris
20	305	4	
	605	10	
	1005	12	
	1005	12	
25	305	5	
	500		
	605		
	1005		
30	500	6	
	605		
	1005		
	500	8	
	605		
	1005		
35	1005	10	
	605	12	
	500	10	
	605		
1005			
40	500	8	
	605		
	1005		
	500	10	
	605		
	1005		
	500	12	
	605		
1005			
50	500	16	
	605	8	
	1005	8	
	500	10	
	605		
1005	12		

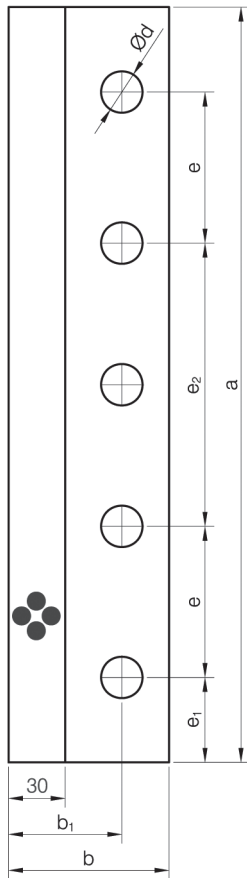
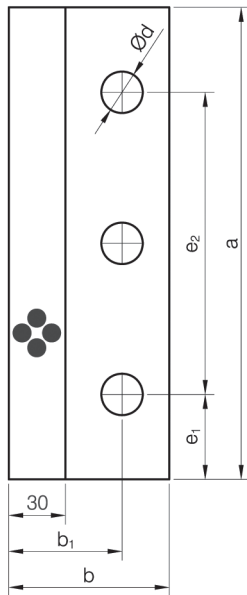
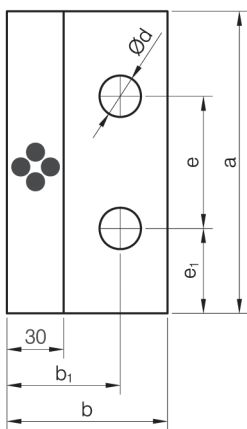
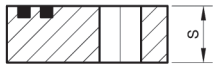
b	L	s	Pris
50	605	12	
	1005		
	605	20	
	1005		
60	605	8	
	1005		
	605		
	605		
	1005		
	605	12	
1005			
500	16		
605			
1005			
75	500	20	
	1005		
	500	12	
	605		
80	1005	16	
	500		
	605	20	
	1005		
100	500	10	
	1005		
	500		
	605	12	
	1005		
	500		
125	605	20	
	1005		
160	1005		



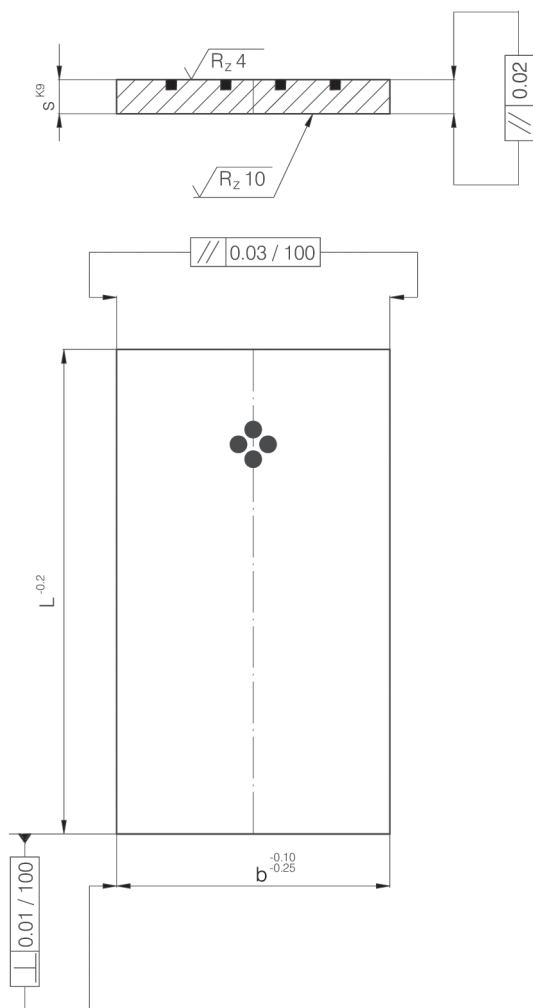
b	L	s	Pris
25	305	5	
30		6	
35		10	
40	1005	8	
		12	
50		10	
		20	
		16	
60		20	
80		12	
		20	
100		20	



e ₁	e ₂	e ₃	e ₄	e ₅	e ₆	b ₁	b ₂	Form	b	L	Pris
60						10	21	A	32	100	
55	55				B			150			
60	60				C			160			
55	50	55			30	36	C	50	200		
70	70	70					D		250		
65	65	65	65				D		300		
80	75	75	80				E		350		
90	90	90	90				E		400		
95				95					F	500	
115	110	110	110	115			F		600		
130	125	125	125	125	130			F		800	
								G		605	
										1005	

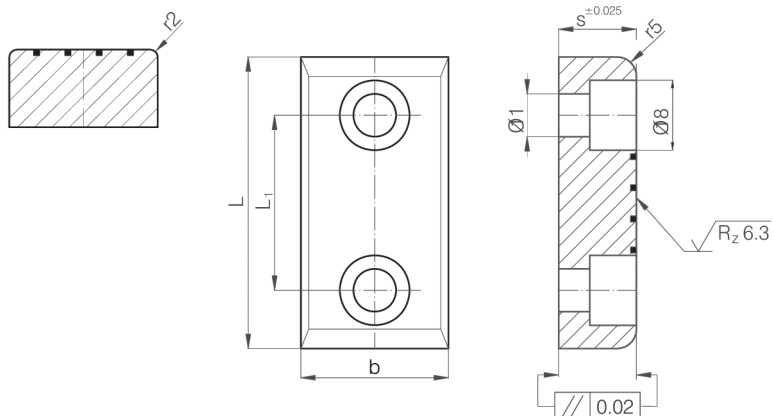


b ₁	e	e ₁	e ₂	d	b	a	s	Form	Pris
60	70	45	-	22	85	160	30	A	
	110		-			B			
	-		160			250		C	
	80		210			300		-	
-	-	-	-	-	400	1005	-		
75	70	45	-	18	125	160	25	A	
	110		-			B			
	-		160			250		C	
	80		150			400		-	
	-	-	-	-		-	1005	-	
	70	45	-	22		160	30	A	
	110		-			B			
	-		160			250		C	
	80		210			300		-	
	-	50	-	-		-	350	500	-
-	-	-	-	-	400	1005	-		



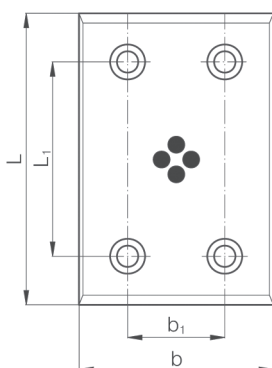
b	h	L	Pris
25	5	50	
		71	
		90	
40		50	
		71	
		90	
63	6	80	
		100	
		125	
		160	
		200	
		80	
63	6	100	
		125	
		160	

Form A

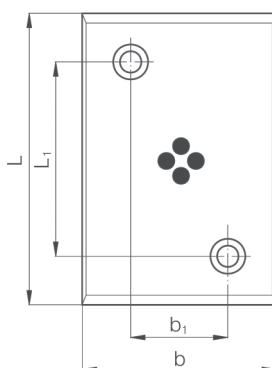


1281.5 - b x L x Form

Form B

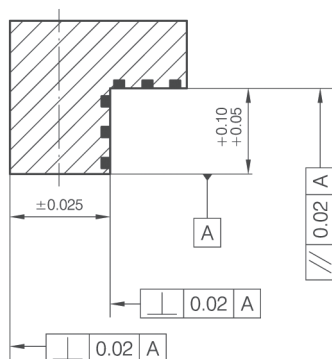
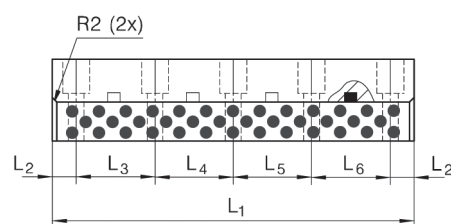
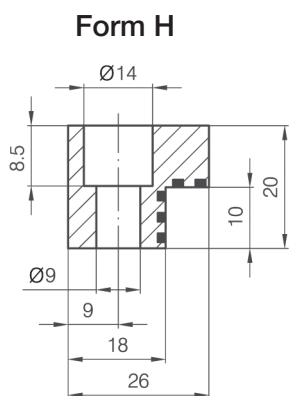
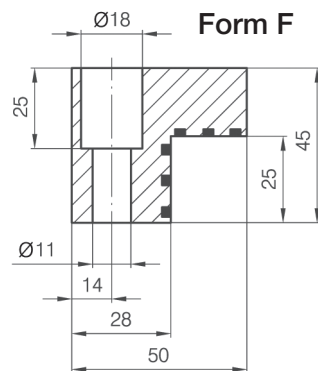
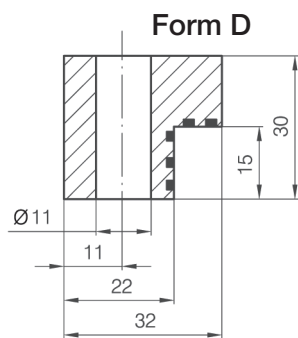



Form C



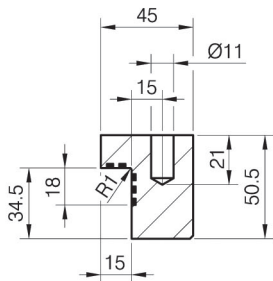
b x L x s	b ₁	L ₁	Form	Pris
28x75x20		45	A	
28x100x20		50		
28x125x20		75		
28x150x20		100		
38x75x20		45		
38x100x20		50		
38x125x20		75		
38x150x20		100		
38x200x20		150		
48x75x20		45		
48x100x20		50		
48x125x20		75		
48x150x20		100		
48x200x20		150		
58x75x20		45		
58x100x20		50		
58x150x20		100		
75x75x20		25		
75x100x20		50		
75x125x20		75		
75x150x20		100		

b x L x s	b ₁	L ₁	Form	Pris
75x200x20		150	A	
75x100x20	25	50	C	
100x100x20	50	5	B	
100x125x20		75		
100x150x20		100		
100x200x20		150		
100x250x20		200		
100x300x20		200		
125x125x20		75		
125x150x20		100		
125x200x20		150		
125x250x20		200		
125x300x20	250			
125x350x20	200			
150x150x20	100	100		
150x299x20		150		
150x250x20		200		
150x300x20		250		
200x200x20	150	150		
200x250x20		200		
200x300x20		250		

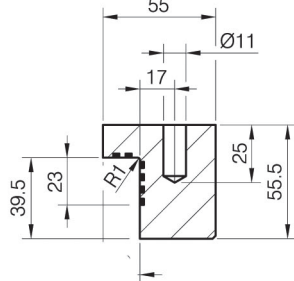


L ₂	L ₃	L ₄	L ₅	L ₆		Form	L ₁	Pris
20	60	-	-	-	2 x M8	H	100	
	55	55	-		3 x M8		150	
		50	55		4 x M8		200	
	60	-	-		2 x M10	D	100	
	55	55	-		3 x M10		150	
		50	55		4 x M10		200	
	70	70	70				250	
	55	50	55		F	200		
	70	70	70			250		
	65	65	65			300		
80	75	75	80	350				

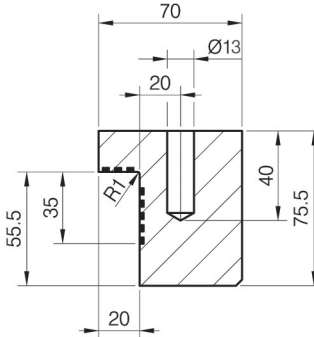
Form A



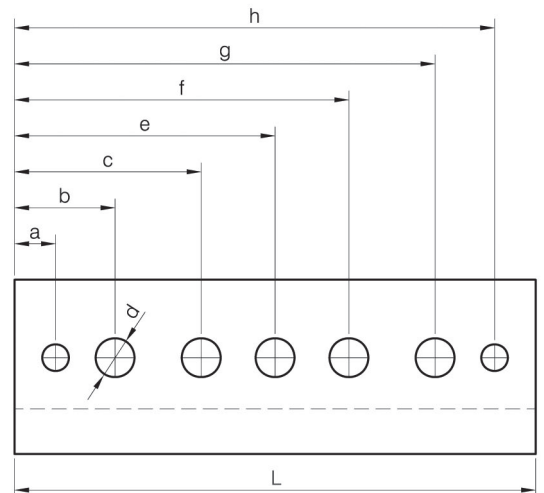
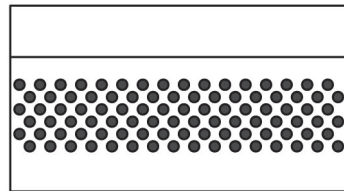
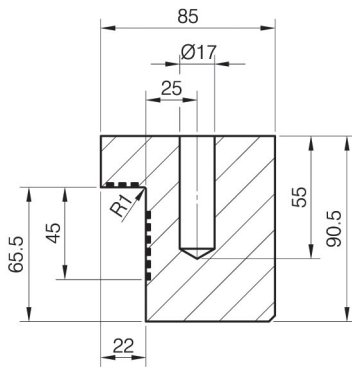
Form B



Form C



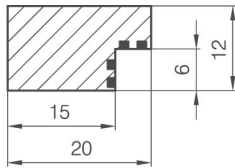
Form D



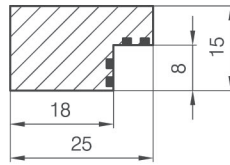
1282.1 - Form_x L

a	b	c	e	f	g	h	d	Form	L	Pris
10	27,5	-	-	-	72,5	90	13	A	100	
-					97,5	-			125	
10					132,5	150			160	
12,5	35	125	200	275	125	147,5	17	C	160	
					165	187,5			200	
					215	237,5			250	
15	42,5	-	-	-	365	387,5	22	D	400	
					117,5	145			160	
					157,5	185			200	
			125		207,5	235			250	
			200		357,5	385			400	

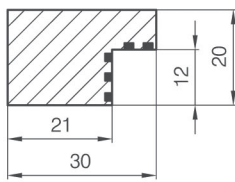
Form A



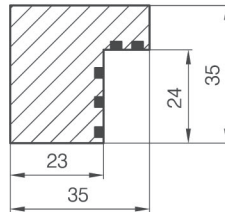
Form B



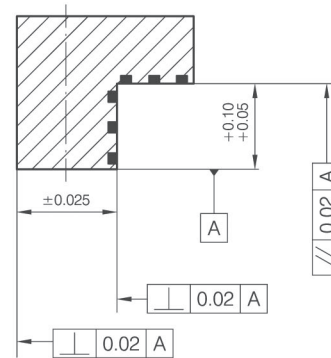
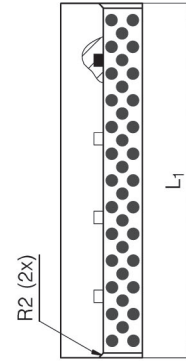
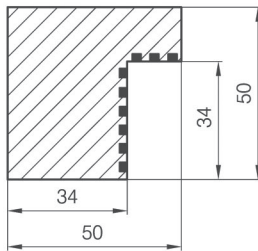
Form C



Form E



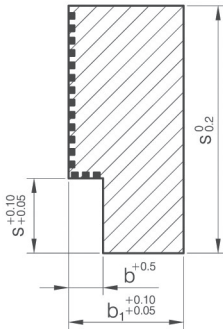
Form G



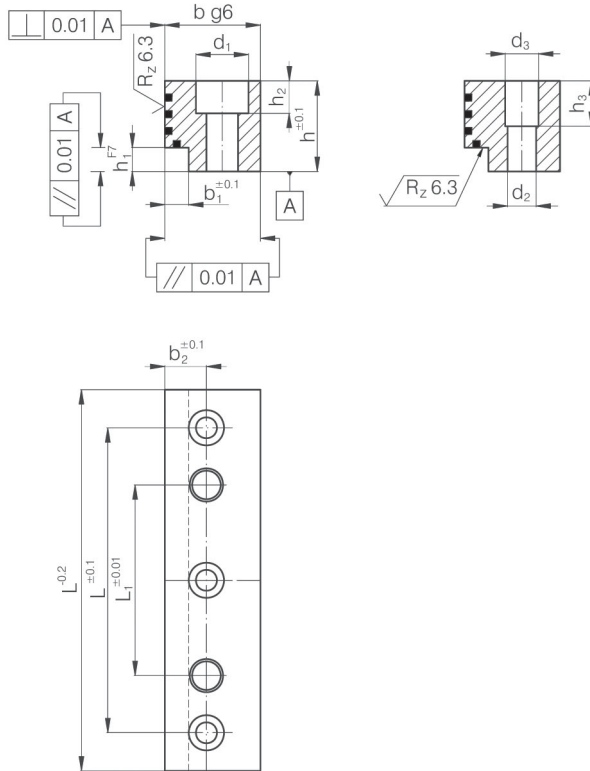
Form	L ₁ =500	L ₁ =605	L ₁ =1005	Pris
A	■	■	■	
B	■	■	■	
C	■	■	■	
D	■	■	■	
E	■	■	■	
G	■	■	■	




1283 - Form_x L₁



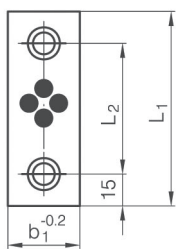
L	b ₁	s ₁	b	s	Pris		
205	5	5	15	12			
		7	20	17			
22							
27							
36							
605	8	10	28	46			
				12		40	66
							22
	26						



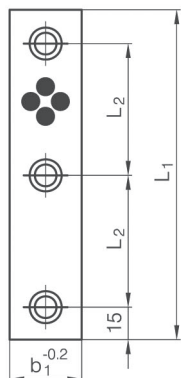
1283.2 - b x L

b	L	h	b ₁	b ₂	L ₁	L ₂	h ₁	h ₂	h ₃	d	d ₁	d ₂	d ₃		Pris
16	50	11	5	9,5	34	14	4,0	5,7	-	5,5	10,0	5,0	-	2	
	71				55	35								3	
	90				74	54								3	
20	80	19	5	12,0	64	40	5,0	6,8	9,5	6,6	11,0	6,0	7,0	2	
	100				84	60								3	
	125				109	85								3	
25	100	31	6	15,5	80	50	6,0	9,0	19,0	9,0	15,0	8,0	9,0	2	
	125				105	75								3	
	160				140	110								3	
30	125	49	7	18,0	95	55	8,0	11,0	34,0	11,0	18,0	10,0	12,0	2	
	160				130	90								3	
	200				170	130								3	

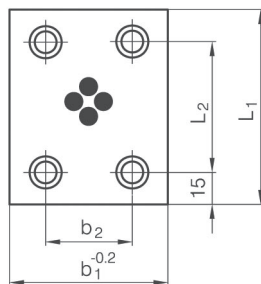
Form A



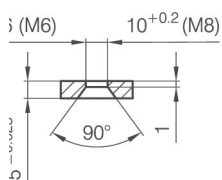
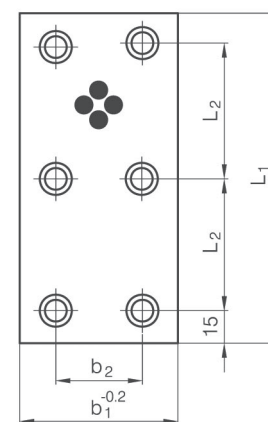
Form B




Form C



Form C

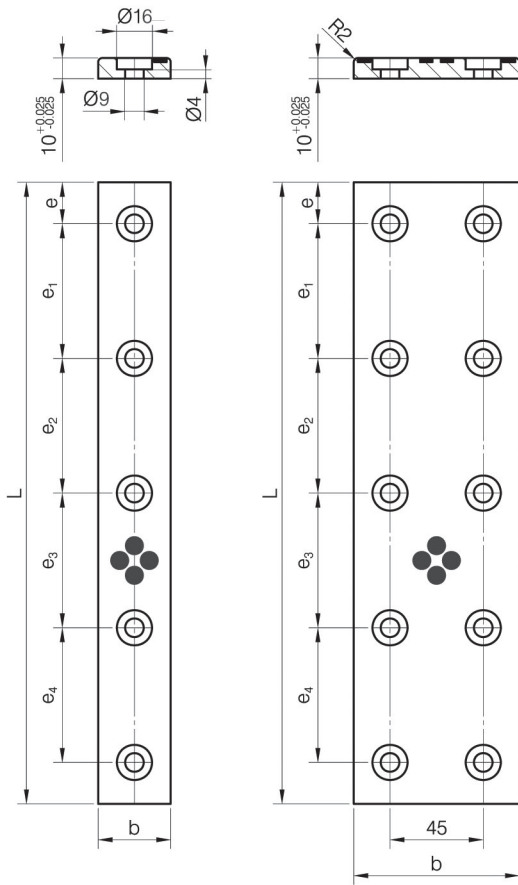


1284 - $b_1 \times L_1$

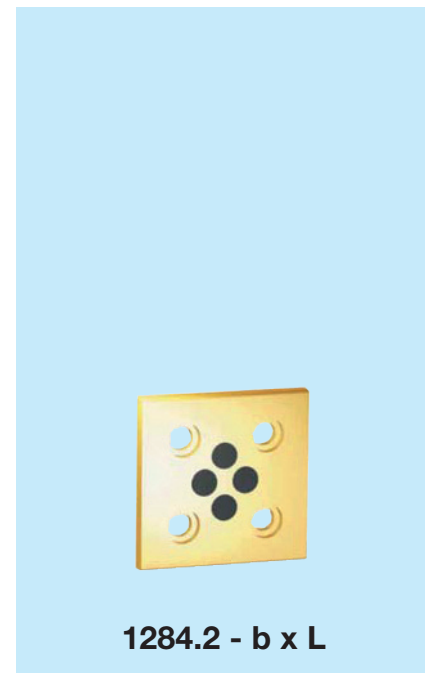
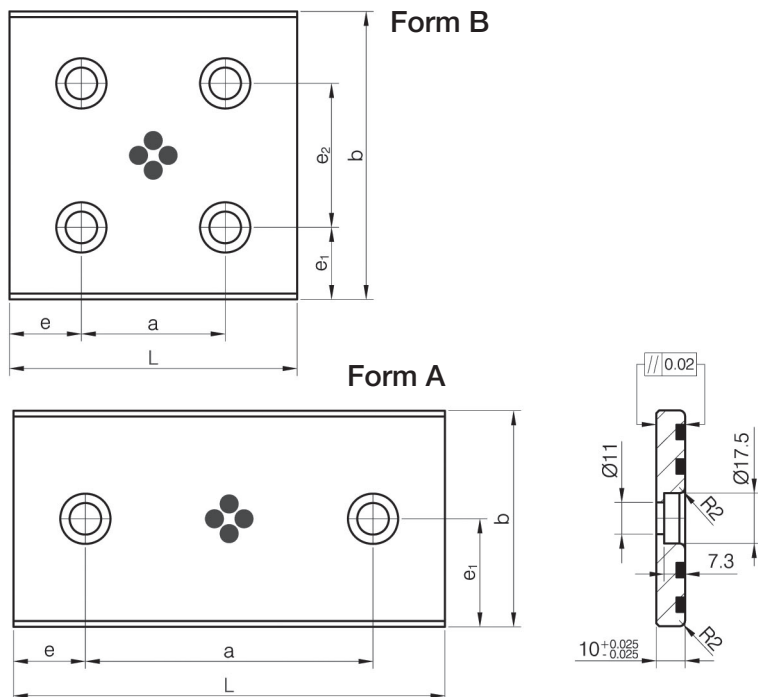
L ₂	Form		b ₂	b ₁	L ₁	Pris
20	A	M6	-	18	50	
45					75	
70	100					
60	150					
20	B	M6	-	28	50	
45					75	
70	100					
60	150					
20	A	M8	-	38	50	
45					75	
70	100					
60	150					
45	B	M8	-	48	75	
70					100	
95	125					
60	150					
45	C	M8	45	75	75	
70					100	
95	125					
60	150					
45	D	M8	70	100	100	
70					125	
95	150					
60	150					

Form A

Form B

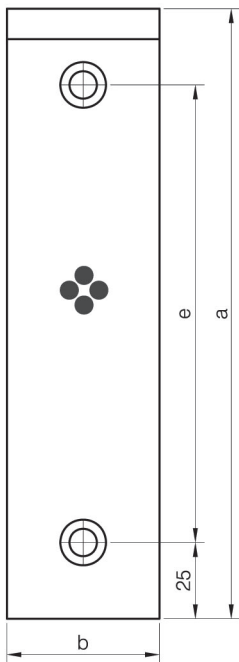


e	e ₁	e ₂	e ₃	e ₄	b	L	Form	Pris
20	60	-	-	-	35	100	A	
	55	55	-	-		150		
		50	55	-		200		
	70	70	70	-		250		
	65	65	65	65		300		
	80	75	75	80		350		
	60	-	-	-	50	100		
	55	55	-	-		150		
		50	55	-		200		
	70	70	70	-		250		
	65	65	65	65		300		
	80	75	75	80		350		
	110	-	-	-	75	150	B	
	80	80	-	-		200		
105	105	-	-	250				
85	90	85	-	300				
120	120	120	115	400				
115	115	115	115	500				

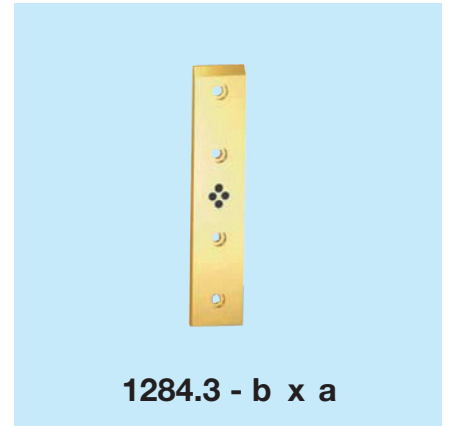
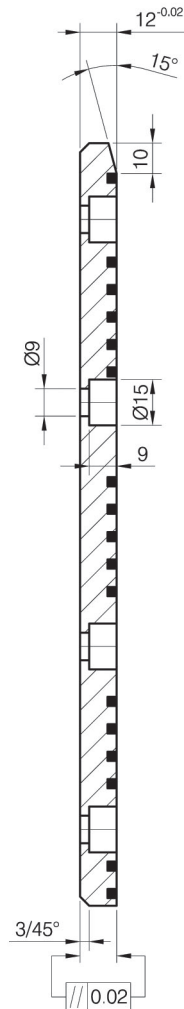
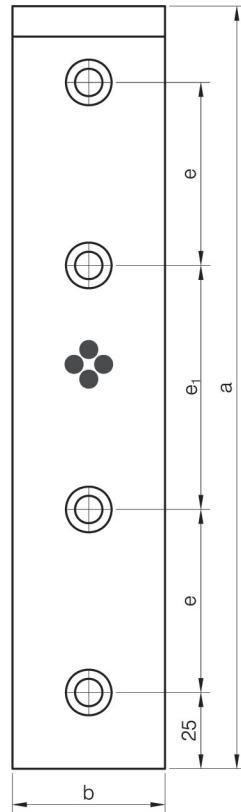


e ₁	e ₂	a	e	b	L	Form	Pris	
14		45	15	28	75	A		
		50	25		100			
		75			125			
		100			150			
19		45		15	38			75
		50	25	100				
		75		125				
		100		150				
24	45	15		48	75			
	50	25	100					
	75		125					
	100		150					
37,5	45		15	75	75			
	50	25	100					
	75		125					
	100		150					
25	50		100	25	100	200	B	
		75	125					
		150	150					
		200	250					
37,5		100	25		125	150		
		150				200		
		200				250		
25		100	100		25	150		
	150		200					
	200		250					

Form A



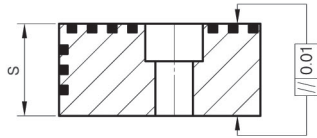
Form C



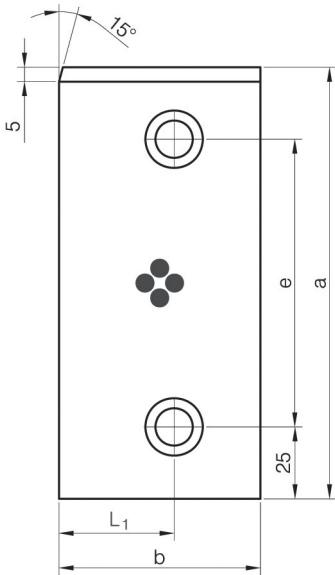
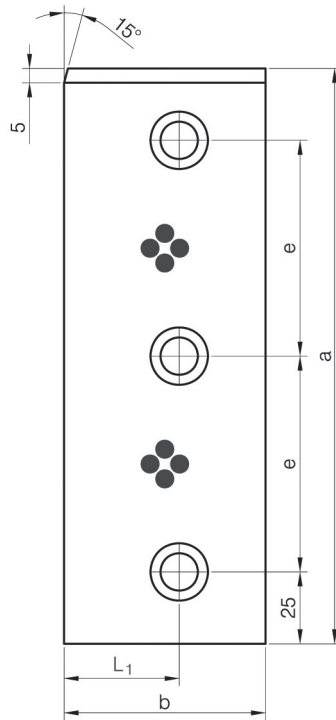
e	e ₁	b	a	Form	Pris	
110	-	25	160	A		
150			200			
30		80	30			
50						100
75		125				
110		160				
150		200				
30		80				40
50						
75		125				
110		160				
150		200				
30	80	50				
50				100		
75	125					
110	160					
150	200					

e	e ₁	b	a	Form	Pris	
150	-	50	200	A		
60	80		250			
80	90		300			
100	100		350			
120	110		400			
30	-	60	80	A		
50			100			
75			125			
110			160			
150			200			
30		80	80		80	
50					100	
75		125				
110		160				
150		200				
70		60			250	C

Form A

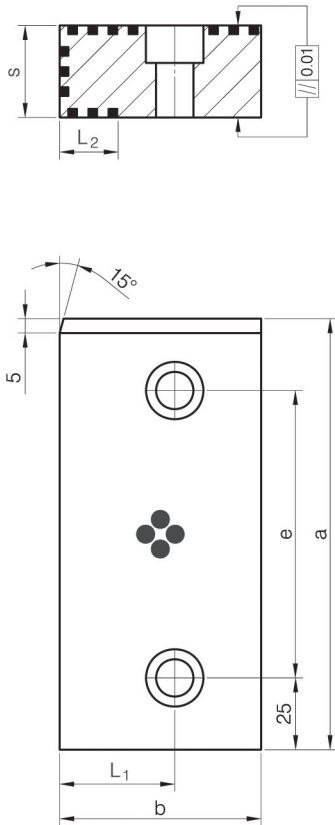


Form C

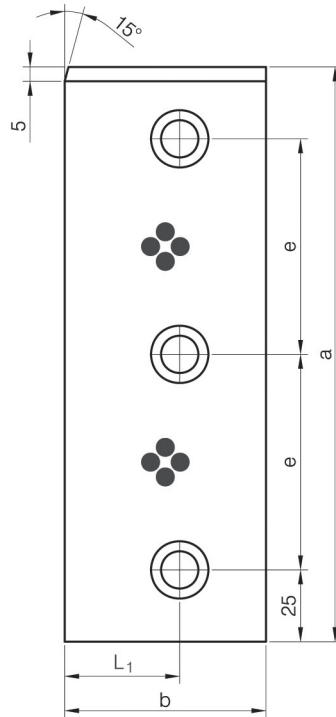


L ₁	e	b	a	s	Form	Pris
30	75	60	125	30	A	
	100		150			
	110		160			
	75		200			
	75		125	40	A	
	100		150			
	110		160			
	75		200		B	

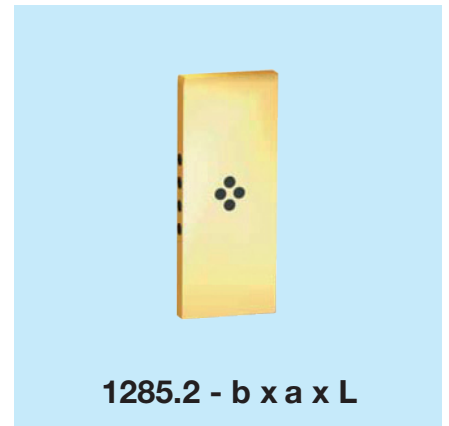
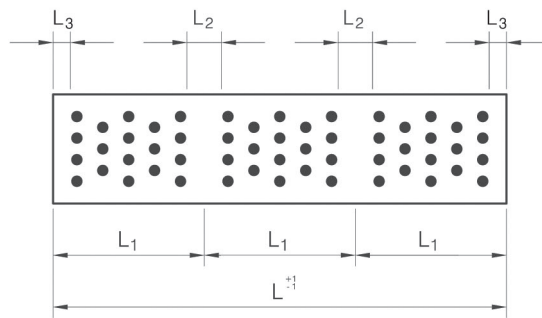
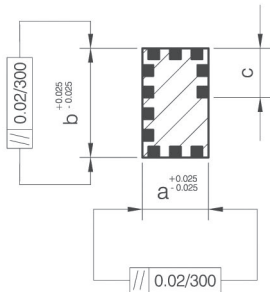
Form A



Form C



L ₁	L ₂	e	b	a	s	Form	Pris
40	25	75	70	125	32	75	
		100		150			
		75		200			
55	30	75	90	125	45	75	
		50		150			
		75		200			

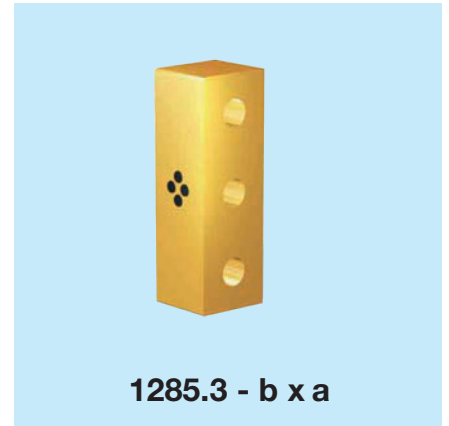
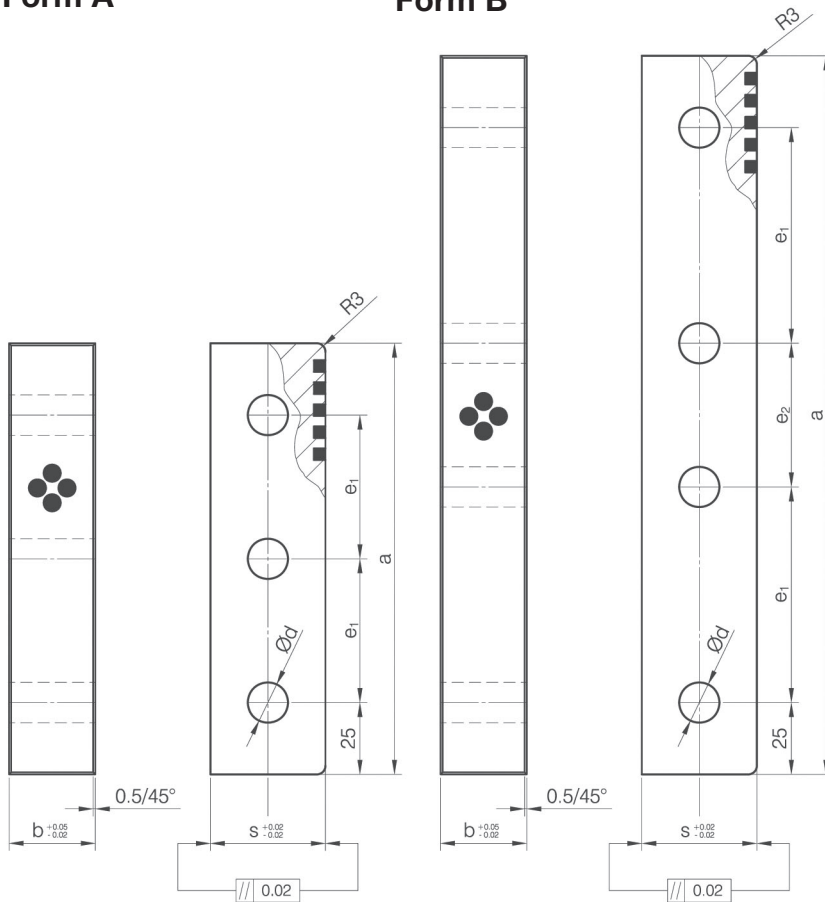


1285.2 - b x a x L

c	L ₁	L ₂	b	a	L	Pris
6	25	6	15,3	10,3	75	
					100	
					125	
					150	
					175	
					200	
					225	
					250	
					275	
					300	
8	35	8	25,3	15,3	105	
					140	
					175	
					210	
					245	
					280	
					315	
					350	
					385	
					420	
12	45	10	35,3	25,3	455	
					490	
					135	
					180	
					225	
					270	
					315	
					360	
16	55	12	45,3	35,3	405	
					450	
					495	
					165	
					220	
					275	
					330	
385						
440						
495						

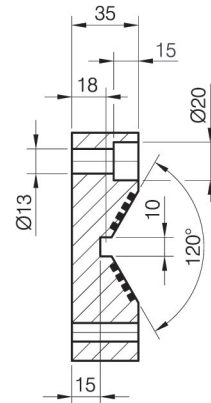
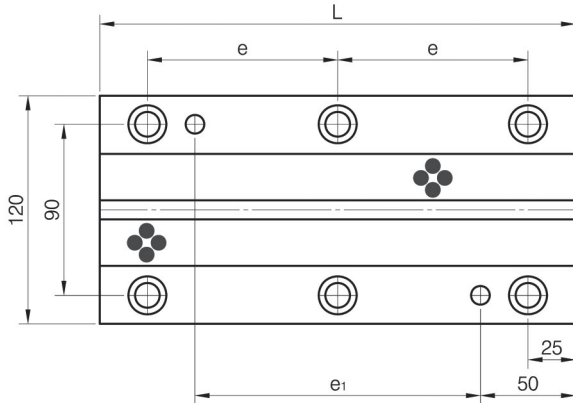
Form A

Form B



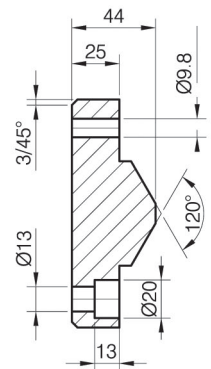
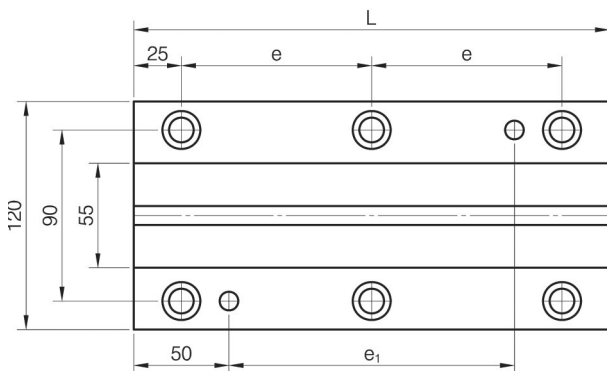
e ₁	e ₂	d	b	a	s	Form	Pris	
50	-	14	30	150	40	A		
75	50			200		B		
				250				
50	-	40	40	150		A		
75	50			200		B		
				250				
50	-	18	45	150	50	A		
75	50			200		B		
				250				
50	-		55	55		150		A
75	50					200		B
						250		
50	-	60	60	150	A			
75	50			200	B			
				250				
50	-	70	70	150	A			
75	50			200	B			
				250				

Form A



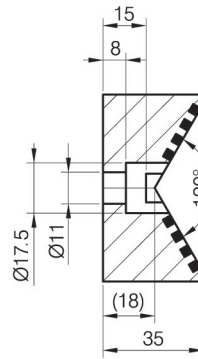
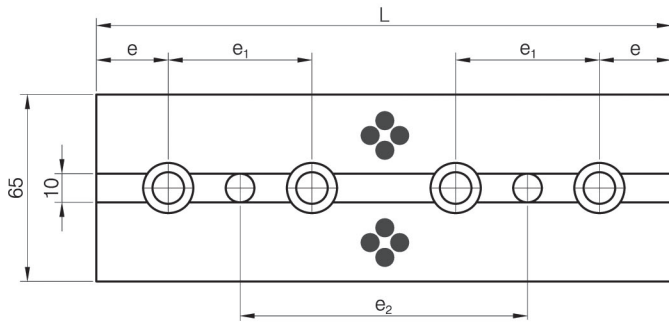
1286 - L x Form_

Form B

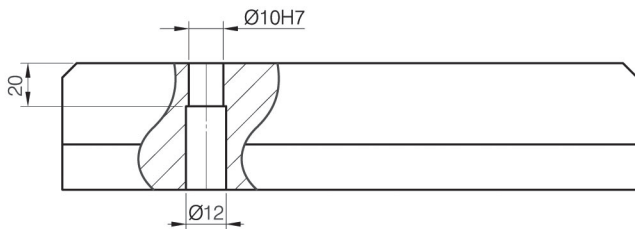
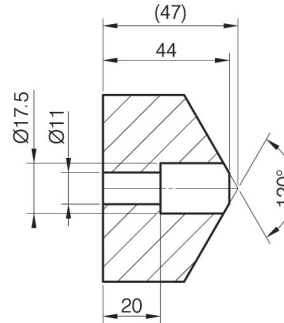
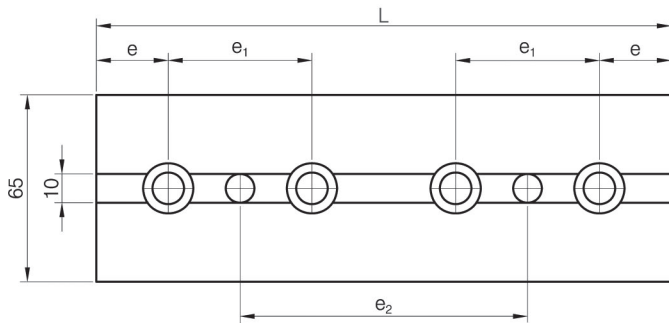


e	e ₁	L	Form		Pris
			A	B	
50	50	150	■	■	
75	100	200	■	■	
100	150	250	■	■	
125	200	300	■	■	

Form A

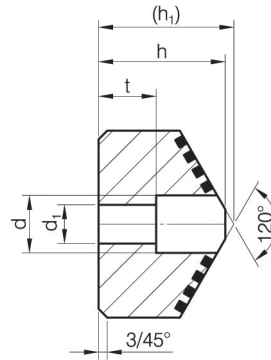
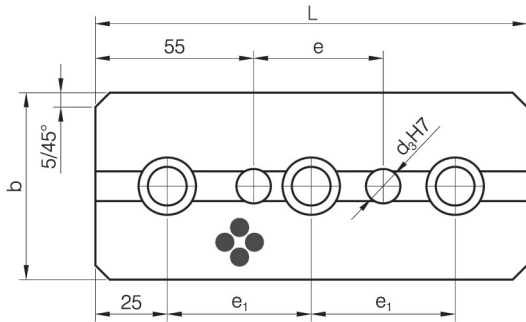


Form B

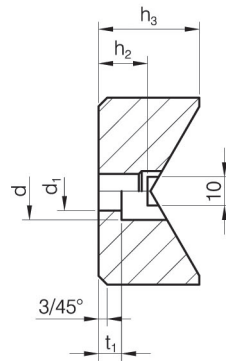
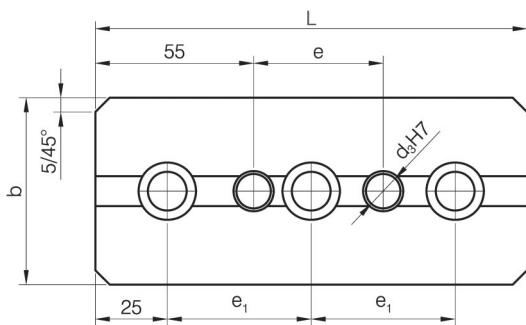


e	e ₁	e ₂	L	Form		Pris
				A	B	
20	60	20	100	■	■	
		50	150	■	■	
25	50	100	200	■	■	
		150	250	■	■	
		200	300	■	■	

Form A



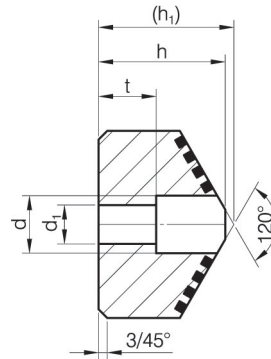
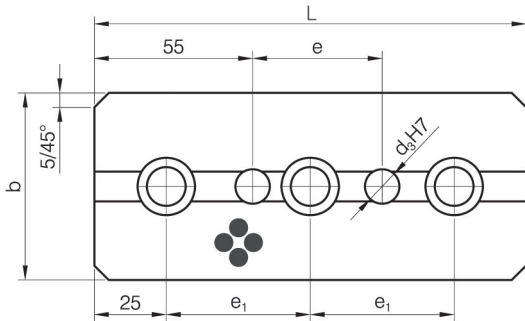
Form B



1286.2 - L x Form_

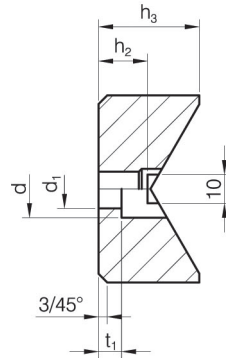
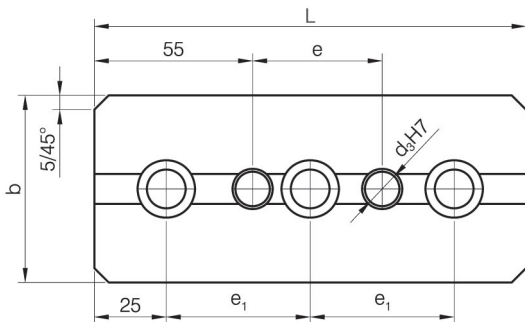
e	e ₁	h	h ₁	h ₂	h ₃	t	t ₁	d	d ₁	d ₃	b	L	Form		Pris
													A	B	
45	50	44	47	15	35	20	8	20	13,5	12	65	150	■	■	
95	75											200	■	■	
145	100											250	■	■	
195	125											300	■	■	
45	50	52	57	24	80	15	15	26	17,5	16	125	150	■	■	
95	75											200	■	■	
145	100											250	■	■	
195	125											300	■	■	

Form A

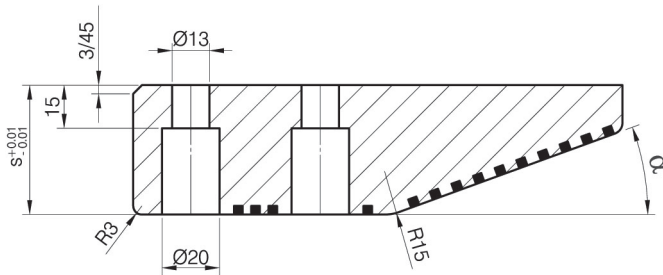
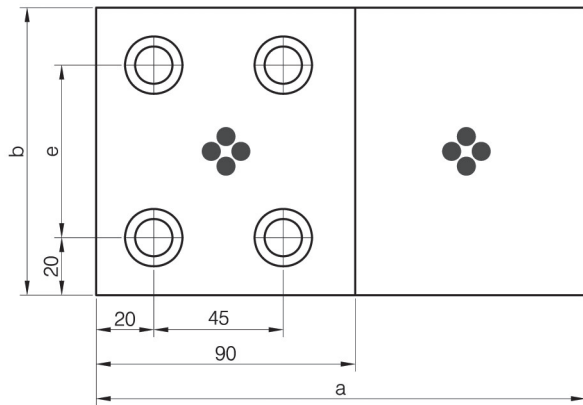


1286.3 - L x Form_

Form B



e	e ₁	h	h ₁	h ₂	h ₃	t	t ₁	d	d ₁	d ₃	b	L	Form		Pris
													A	B	
50	-	39	42	21	40	13	10	20	13,5	12	65	150	■	■	
100												200	■	■	
150	100											250	■	■	
200	125											300	■	■	
50	-	52	57	27	60	15	15	26	17,5	16	125	150	■	■	
100												200	■	■	
150	100											250	■	■	
200	125											300	■	■	



1287 - b x a

e	s	α	b	a	Pris
60	45	20	100	170	
		30		150	
	60	170			
85	45	20	125	170	
		30		150	
	60	170			
110	45	20	150	170	
		30		150	
	60	170			
160	45	20	200	170	
		30		150	
	60	170			